



What Do Daycare & Soul Food Have to Do with Climate Change? Forging City-Community Partnerships for Climate Action



CHICAGO COMMUNITY
CLIMATE ACTION TOOLKIT
climatechicago.fieldmuseum.org

Jennifer Hirsch, Ph.D.
jhirsch683@gmail.com

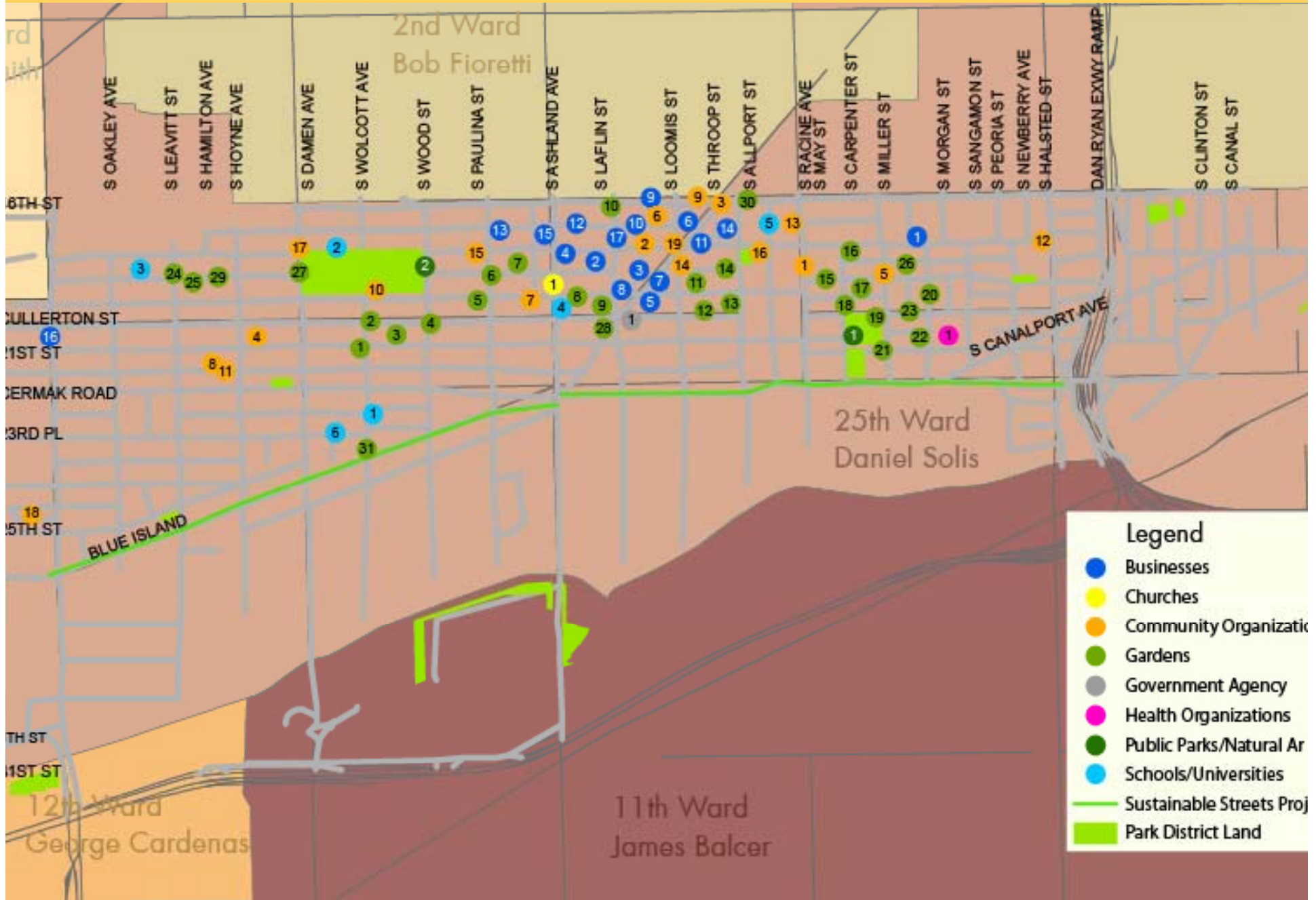
The Beginning: Rapid Participatory Action Studies



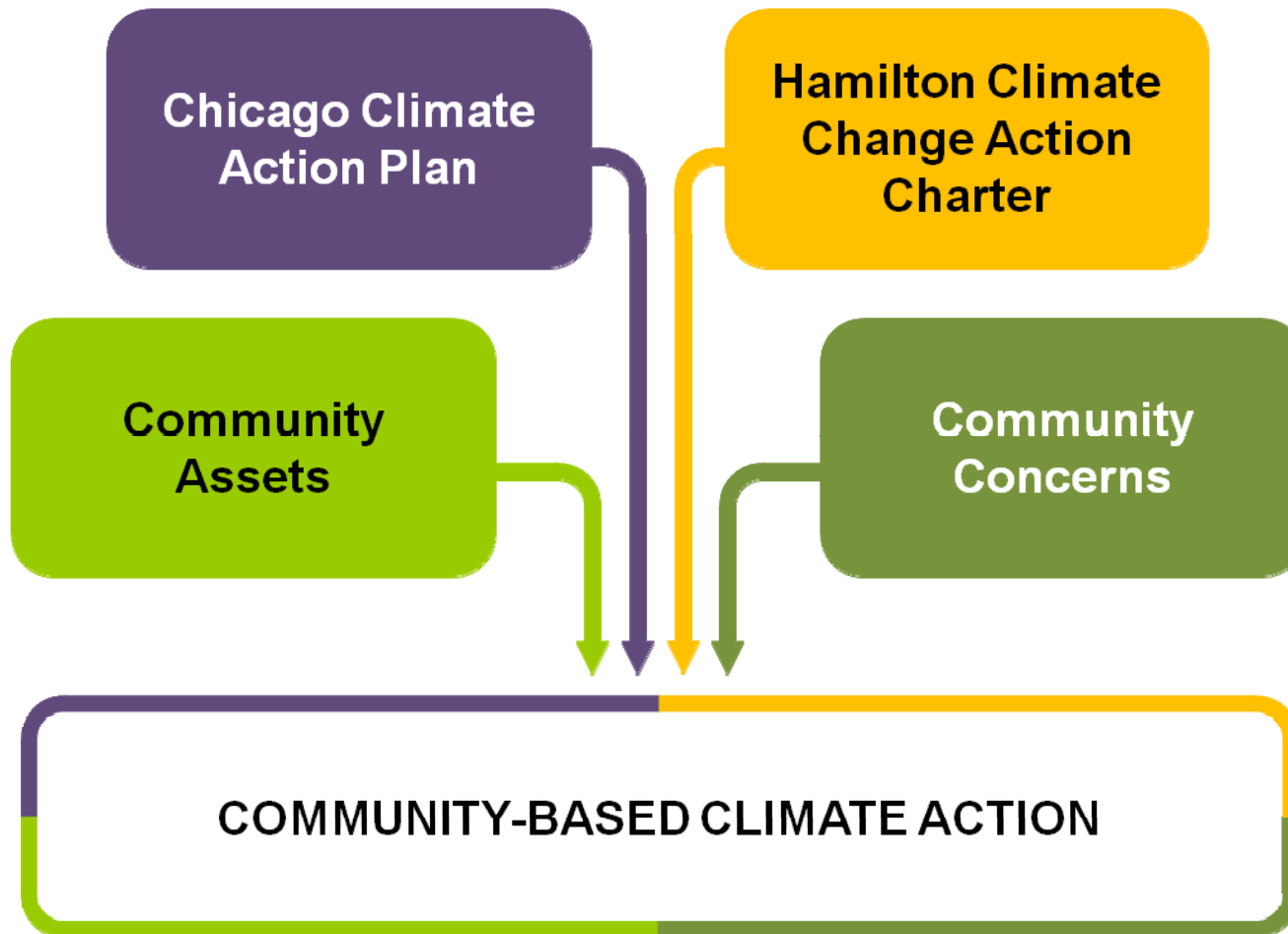


Photo Courtesy of Carrie Porter

Image-Changing: Climate Action is US

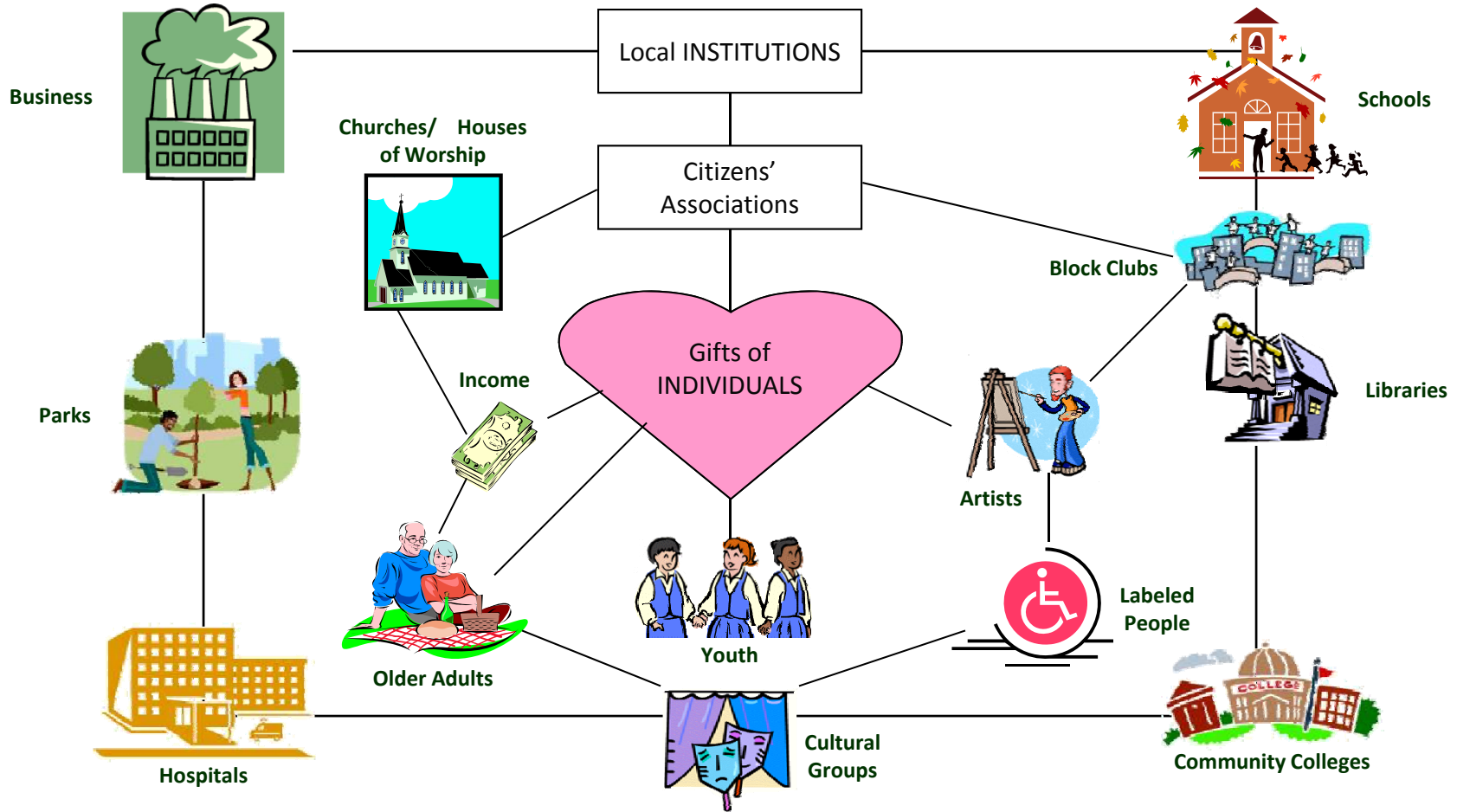


Big Plans, Community Action



This approach is carried out within broader community efforts for social and environmental change.

Community Assets Approach



Asset-Based Community Development (presentation), Kretzmann, John P. and McKnight, John L.

Collaborative Programs

- Energy Action Network
- South Chicago Retrofit Project
- Chicago Community Climate Action Toolkit
- Energy Impact Illinois (U.S. DOE Better Buildings Program)

Recognition

- Showcased by U.S. Dep't of Energy as best practice in community engagement
- Promoted by Resource Media as a “best example” of visual climate communication
- Steering Committee for Garrison Institute, NY Climate, Cities, & Behavior Conference, 2013



What 3 Words Come to Mind When You Hear Climate Change?

Visual Collages of Climate-Friendly Practices

Object Elicitation

Place Yourself On the Line

Climate-Friendly Practices Checklist

What Does Climate Change Look Like to You?

Participatory Photography

Story Collecting/Telling

Green Asset Mapping

Community Curation

Participatory Mapping

Home Interviews

Community Concerns Checklist

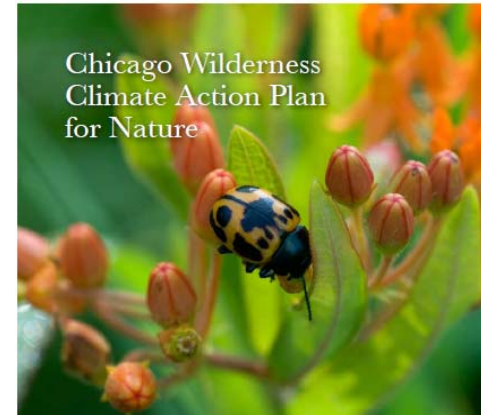
Participatory Action Research

Data Visualization Photography/Video

Community Review of Findings



Big Plans: Community Strategies



Chicago Climate Action Plan: 5 Strategies for the City of Chicago

- 1 Energy Efficient Buildings
- 2 Clean and Renewable Energy Sources
- 3 Improved Transportation Options
- 4 Reduced Waste and Industrial Pollution
- 5 Adaptation

Learn more:
chicagoclimateaction.org

Climate Action Plan for Nature: 5 Strategies for the Chicago Region

- 1 Climate-Friendly Gardens and Lawns
- 2 Water Conservation
- 3 Monitoring
- 4 Stewardship
- 5 Climate Change Education

Learn more:
climatechicago.fieldmuseum.org/learn#capn

Climate-related Community Assets & Concerns

Tangible Assets

- Active libraries/art centers
- Nature preserves
- Entrepreneurs invested in the community
- City-wide partnerships
- Construction/gardening skills
- High percentage of home ownership

Intangible Assets

- Home country-town/family traditions: re-use, gardening, water conservation
- Awareness of climate change through Hurricane Katrina, local weather events
- History of collaboration to address big challenges

Concerns

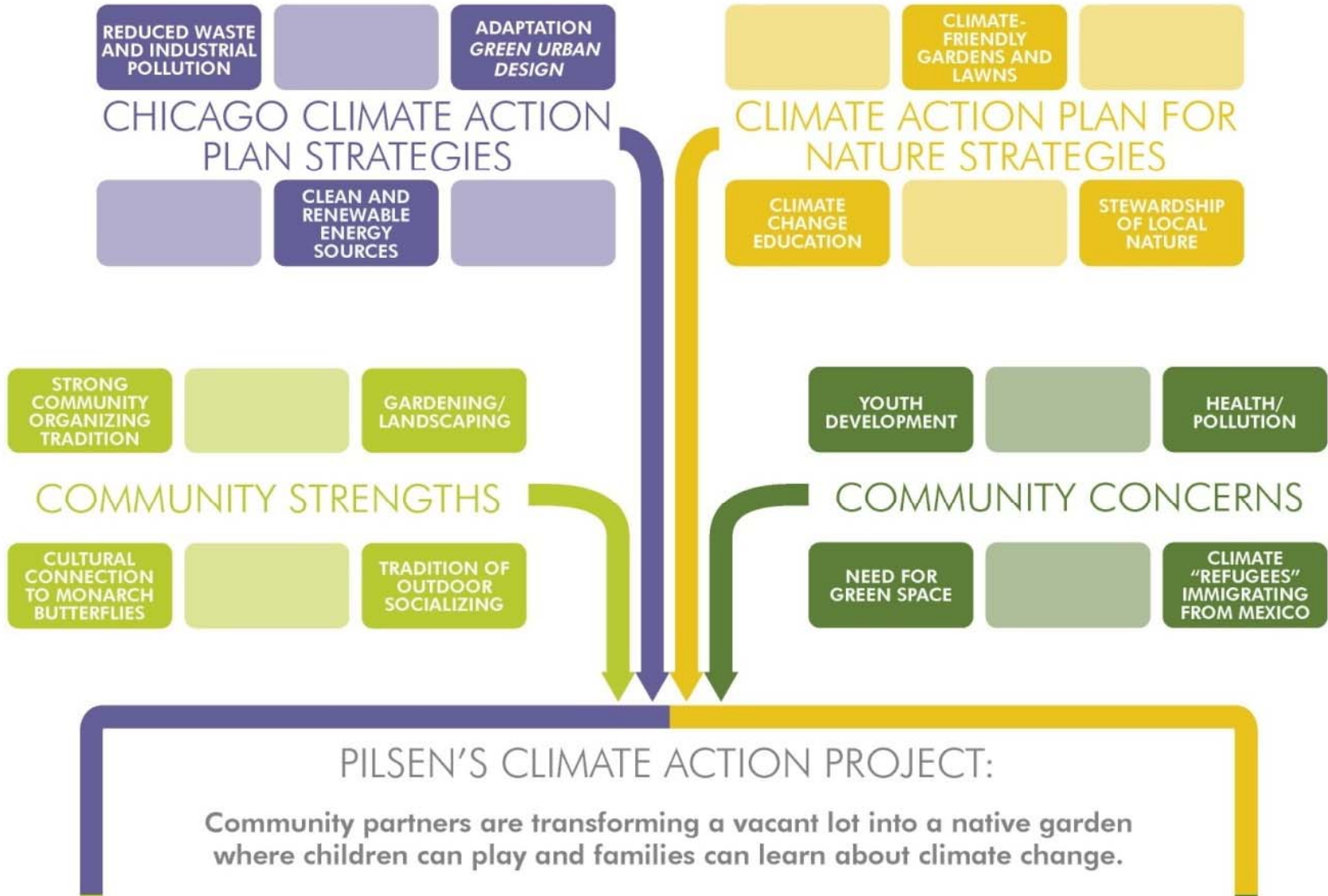
- Access to healthy food
- Youth opportunities
- Air quality
- Beautification
- Economic development
- Revitalizing cultural traditions

Barriers

- Green as gentrification
- Community image
- Suspicion of outside institutions (city, universities)



Pilsen Project Approach



Climate=Co-Benefit

Project	Community	Climate
 <p>Bronzeville</p>	<p>African-American Culture Local Green Economy Health Art Youth Tourism</p>	<p>Stewardship Climate Change Education Green Economy Tour: Transportation, Energy Efficiency, Renewable Energy</p>
 <p>South Chicago</p>	<p>Youth Art Housing</p>	<p>Energy Conservation Adaptation: Engage the Public</p>
 <p>Pilsen</p>	<p>Mexican Culture Environmental Justice Immigration Youth</p>	<p>Climate-Friendly Gardens Climate Change Education Water Conservation Stewardship</p>
 <p>Forest Glen</p>	<p>Youth Local Economy Community Image</p>	<p>Climate-Friendly Gardens Climate Change Education Water Conservation Stewardship</p>

Maintenance & Scale-Up



Illinois EPA Awards Grants for Stormwater Management Programs

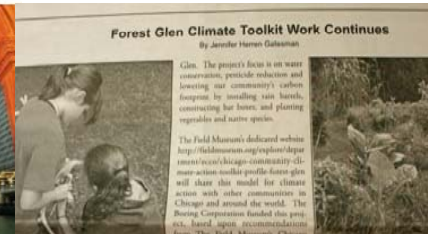
Earth Day is celebrated through water pollution prevention

Urban Juncture, Inc.,
Chicago

\$404,656

Bronzeville Cookin'
Demonstration Roof and
Parking Facility

Green roof, rooftop cistern and permeable parking at redeveloped warehouse, will address stormwater and pollutants in the Chicago River.



Key Role for Local Government

Empower trusted community organizations to take LEADERSHIP and OWNERSHIP of climate action



Forest Glen Climate Toolkit

Making a world of difference right here at home.

The Chicago Climate Action Plan's goal is to reduce carbon emissions 25% below 1990 levels by the year 2020.

The earth's climate is changing in many ways. These changes are caused by human activities, like burning fossil fuels, that produce carbon dioxide and other greenhouse gases. Climate change already affects Chicago with flooding, heavy snowfall, and heat waves. Fortunately, it's not too late for us to make a difference. Our community is working to put climate action in our hands to make our city – and the world – a cleaner, greener place.

In 2011, The Field Museum selected Forest Glen and three other Chicago communities to participate in the museum's Climate Action Toolkit project to help these communities develop programs that address both climate change and local concerns. Forest Glen's Boy Scouts and Girl Scouts, guided by troop leaders and the Sauganash Chamber of Commerce, carried out four major projects to encourage local climate action and to lower the community's carbon footprint. These efforts also aimed to support local businesses, beautify the community, and tackle area problems like mosquitoes and flooding.

Forest Glen residents will continue to advance these local efforts in the years to come. Please visit the links below to find out more and get involved!

Boy Scout Troop 416 measured its hot home to reduce energy around the community by measuring natural mosquito control. Rain set up to LARV traps to help us find areas in an excellent alternative to environmentally harmful pesticides.

Boy Scout Troop 416 installed 40 rain barrels at sites like homes, schools and businesses throughout the community. Rain barrels help manage storm water, reduce flooding, and conserve water that we use for our gardens and lawns.

At North Park Village Nature Center, Boy Scouts planted a demonstration garden of native plant species. Native plants are climate-friendly because they store carbon in their long roots, are generally drought resistant, do not require mowing, pesticides, or fertilizers, and they help the ground absorb storm water.

The Hope Garden is a straw bale garden planted by Girl Scout Troop 12165. These towers maintain the vegetables and herbs with climate-friendly gardening practices, such as using natural fertilizers and conservative watering methods.

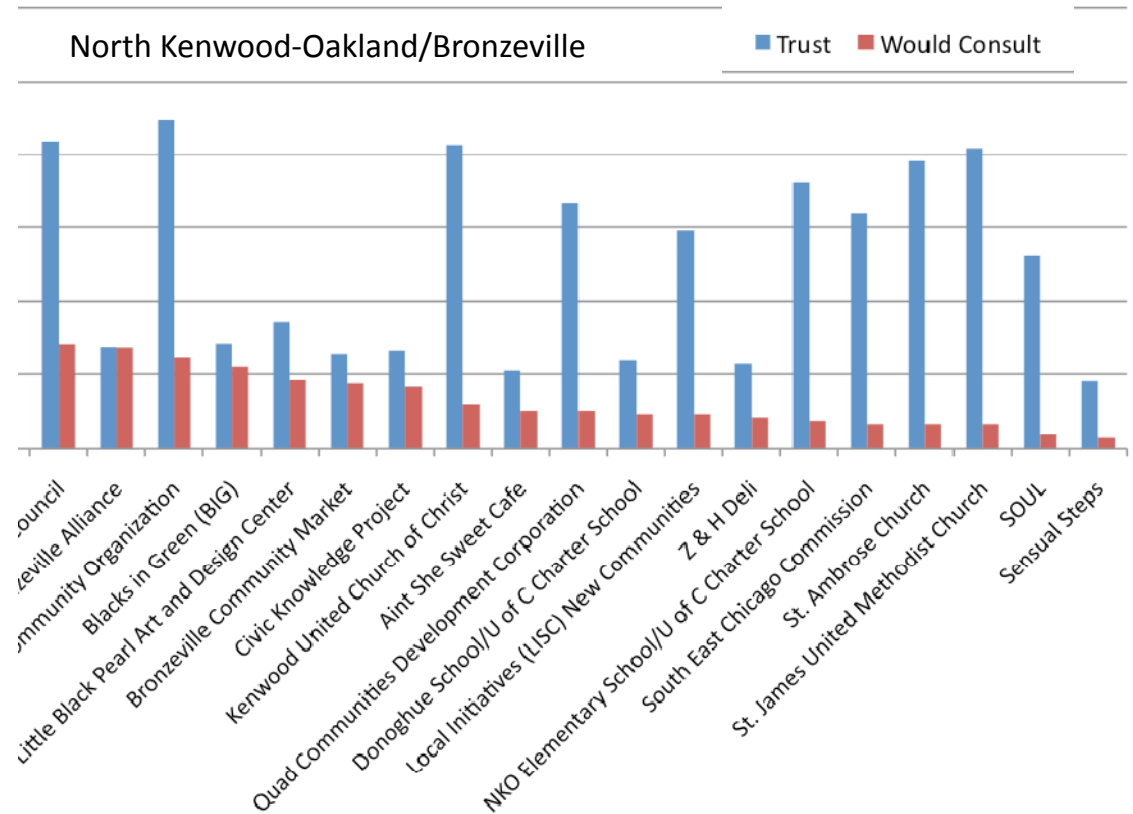
climatechicago.fieldmuseum.org/forestglen

For Facilitating Leadership and Ownership

10. Work through trusted & umbrella organizations
9. Establish a Climate Action Leaders Network
8. Focus on collective solutions
7. Build on assets
6. Identify & publicly recognize local champions and innovations
5. Incorporate climate action into existing programs
4. Link climate metrics to quality of life indicators
3. Create neighborhood demonstration hubs
2. Make it (hyper-) local, cultural, & personal
1. Create & use place-based, visual, & participatory tools

10. Work through Trusted & Umbrella Organizations

10. Trusted organizations



These organizations “perform a critical role in spreading change through society”

(Corner and Randall 2011)

Strategies

9. Establish a Climate Action Leaders Network

10. Trusted organizations

9. Leaders network



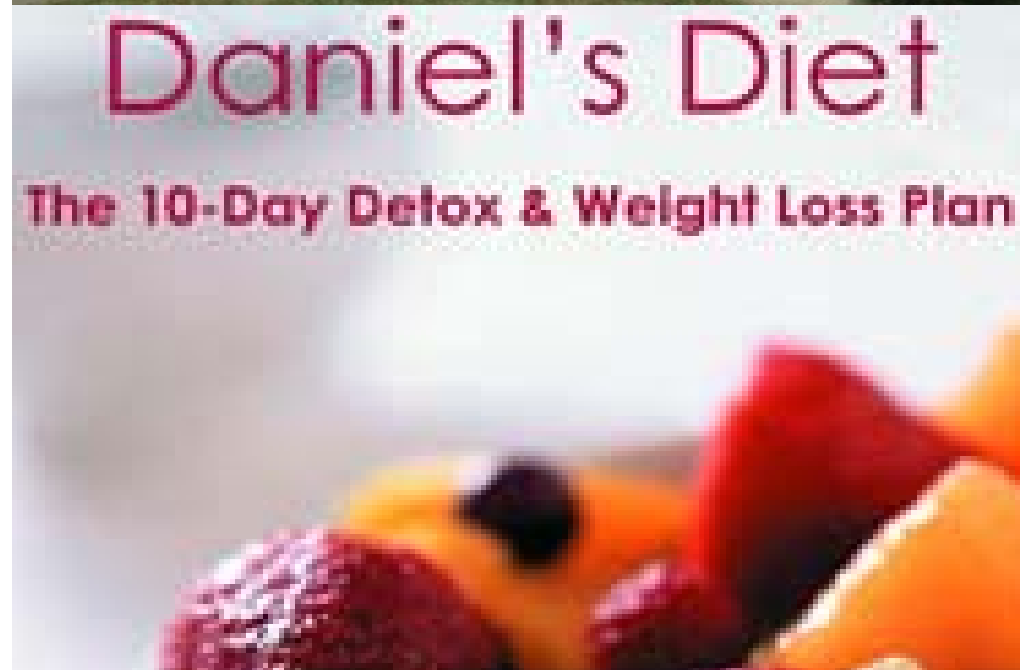
8. Focus on Collective Solutions

- 10. Trusted organizations
- 9. Leaders network
- 8. Collective solutions



7. Build on Assets

- 10. Trusted organizations
- 9. Leaders network
- 8. Collective solutions
- 7. Assets



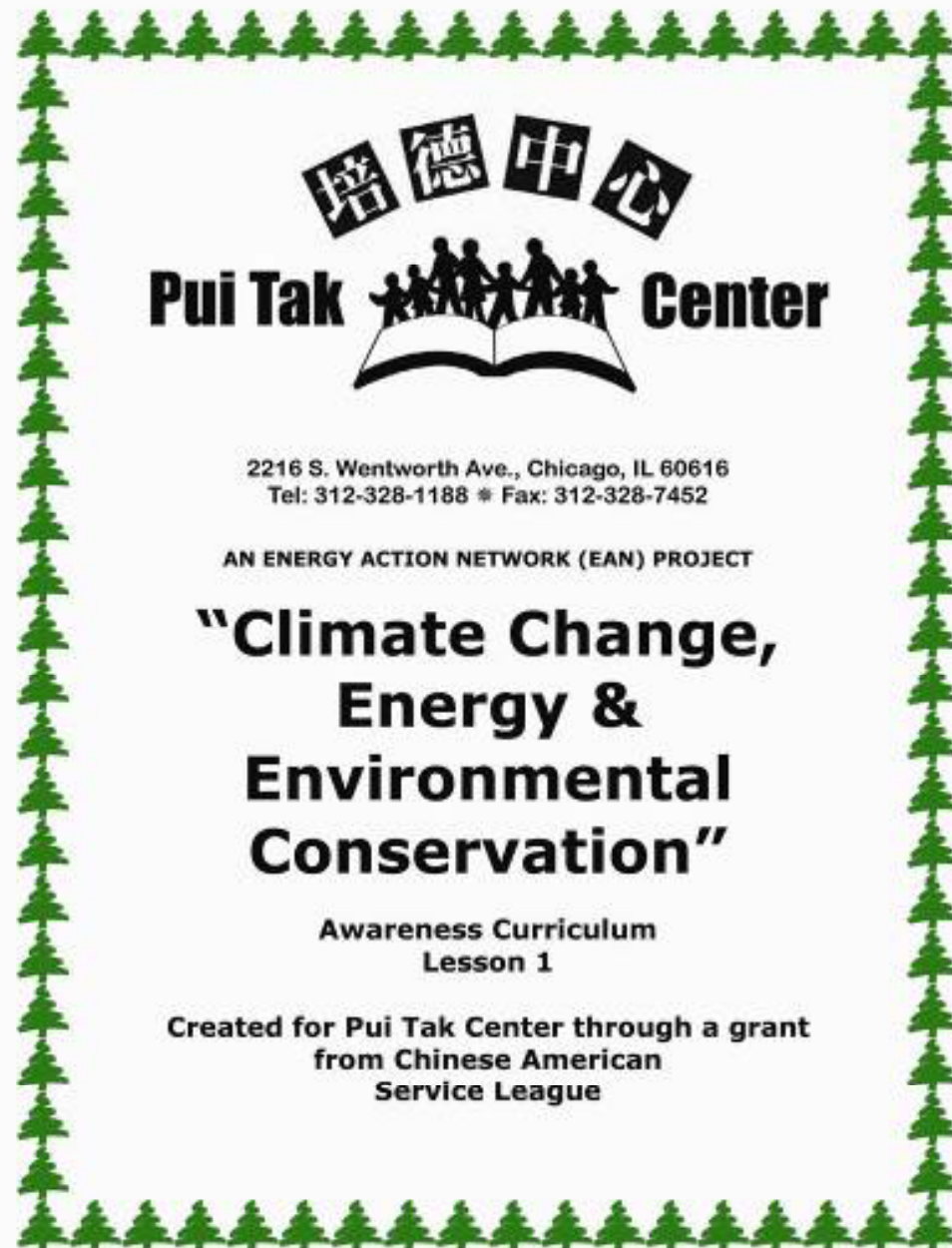
Strategies 6. Identify & Publicly Recognize Local Champions & Innovations

10. Trusted organizations
9. Leaders network
8. Collective solutions
7. Assets
6. Local champions



Strategies 5. Incorporate Climate Action into Existing Programs

10. Trusted organizations
9. Leaders network
8. Collective solutions
7. Assets
6. Local champions
5. Existing programs



The image shows the cover of a curriculum titled "Climate Change, Energy & Environmental Conservation". The cover is framed by a decorative border of green pine trees. At the top center, the Chinese characters "培德中心" (Pui Tak Center) are written in a stylized font. Below this, the English name "Pui Tak Center" is written in a bold, sans-serif font, with a graphic of a family silhouette above an open book. The address "2216 S. Wentworth Ave., Chicago, IL 60616" and contact information "Tel: 312-328-1188 * Fax: 312-328-7452" are listed. Below the address, it says "AN ENERGY ACTION NETWORK (EAN) PROJECT". The main title "Climate Change, Energy & Environmental Conservation" is written in a large, bold, sans-serif font. Below the title, it says "Awareness Curriculum Lesson 1". At the bottom, it says "Created for Pui Tak Center through a grant from Chinese American Service League".

培德中心
Pui Tak Center

2216 S. Wentworth Ave., Chicago, IL 60616
Tel: 312-328-1188 * Fax: 312-328-7452

AN ENERGY ACTION NETWORK (EAN) PROJECT

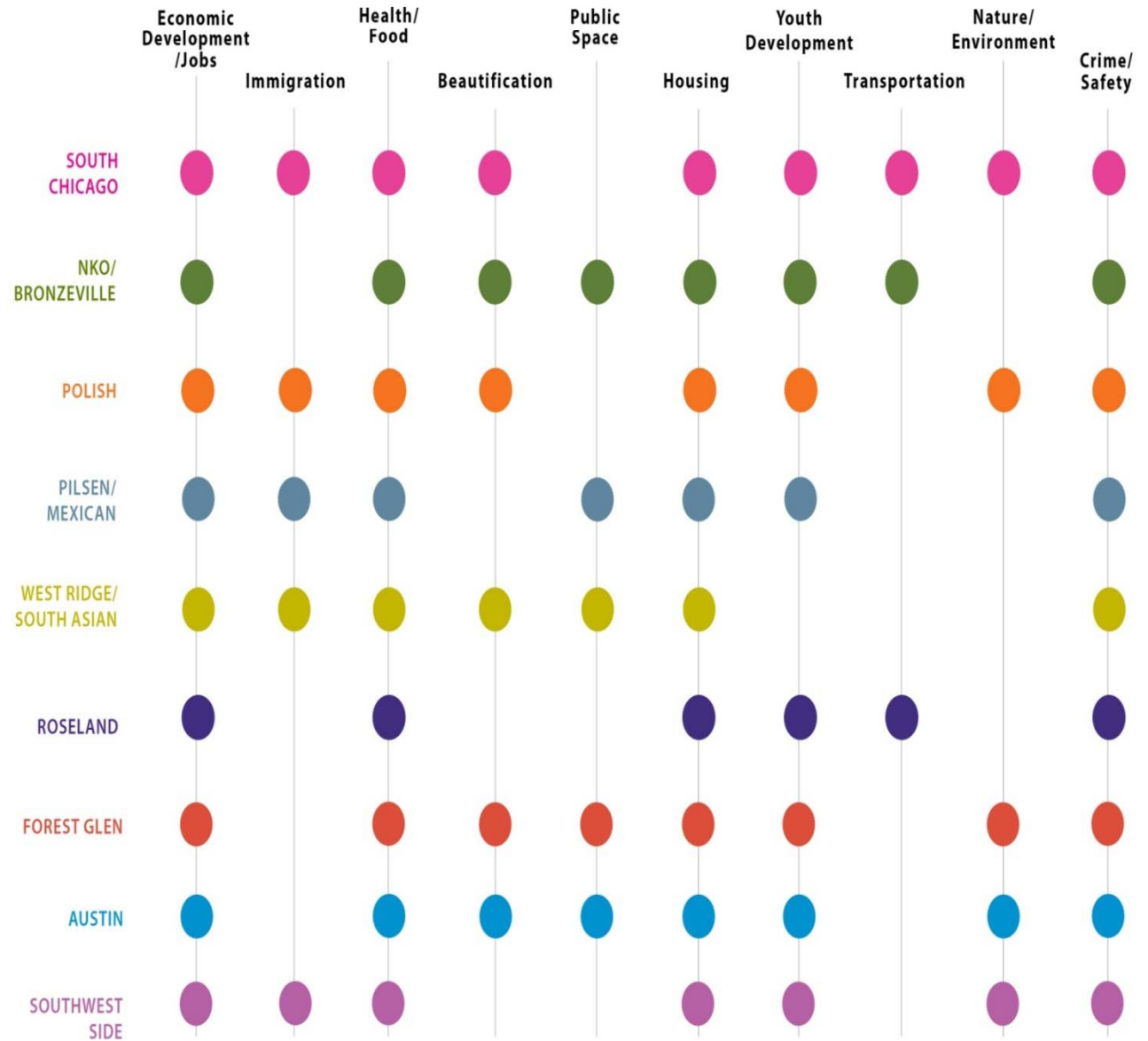
**“Climate Change,
Energy &
Environmental
Conservation”**

Awareness Curriculum
Lesson 1

Created for Pui Tak Center through a grant
from Chinese American
Service League

4. Link Climate Metrics to Quality of Life Indicators

- 10. Trusted organizations
- 9. Leaders network
- 8. Collective solutions
- 7. Assets
- 6. Local champions
- 5. Existing programs
- 4. Quality of life indicators



3. Create Neighborhood Demonstration Hubs

- 10. Trusted organizations
- 9. Leaders network
- 8. Collective solutions
- 7. Assets
- 6. Local champions
- 5. Existing programs
- 4. Quality of life indicators
- 3. Neighborhood hubs

Our Green Community

In the greater Roseland community, people are actively engaged in environmentally and socially conscious practices that improve the quality of life for their community.



When MRS. ROBINSON signed up for weatherization services, we learned that she has been gardening for as long as she can remember – even when she was a young girl she had a “Victory Garden.”

As she got older and her health declined, she wasn't as able to keep up her garden. This past year, DESMOND, a student from CVS has been helping her with her flowers and tomatoes.



REV. AND MRS. HENRY, the Pastor and First Lady of Mary Magdalene Missionary Baptist Church minister to the mind, bodies and souls of their members.

Mrs. Henry is an accomplished cook, who blesses members of the community with her home grown collard greens and pies lovingly made from the peach and pear trees in her back yard.



MR. MADGETT stays connected to his Mississippi farmland roots through his far south side garden. For more than 20 years, he has planted okra, several varieties of tomatoes and peppers, collard greens and more vegetables than you could imagine in 3 ½ acres that he has been cultivating in Chicago!

Brock Social Services



2. Make it (Hyper-) Local, Cultural, & Personal

10. Trusted organizations
9. Leaders network
8. Collective solutions
7. Assets
6. Local champions
5. Existing programs
4. Quality of life indicators
3. Neighborhood hubs
2. Local, cultural, personal



“I think storytelling is important because it helps us to remember. I think that stories are like a bridge, like a glue, like a foundation and that they are critical to allowing a people, a community, a culture to reinvent itself without forgetting its past.”

- Emily Hooper Lansana, Storyteller, In The Spirit

1. Create & Use Place-based, Visual, Participatory Tools

10. Trusted organizations
9. Leaders network
8. Collective solutions
7. Assets
6. Local champions
5. Existing programs
4. Quality of life indicators
3. Neighborhood hubs
2. Local, cultural, personal
1. Place-based tools





SEARCH

TOOLS

COMMUNITY PROJECTS

CLIMATE ACTION MODELS

ABOUT

SHARE

Tools for Climate Action



INTRODUCTION

The Chicago Community Climate Action Toolkit includes a broad array of climate science and action tools.

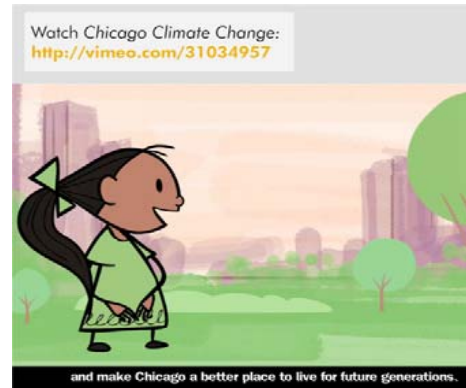
WHAT CAN THE TOOLS HELP YOU DO?

Learn

Get Inspired

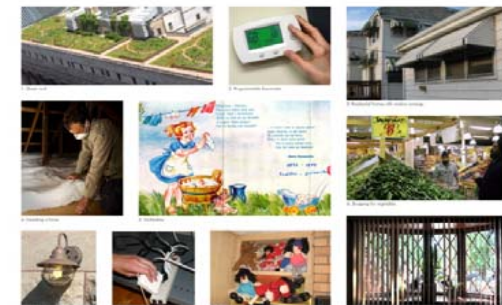
Do Your Own Project

Education, Asset Mapping, & Action



Energy Efficiency

Do these images remind you of anything that you do or have seen others do?



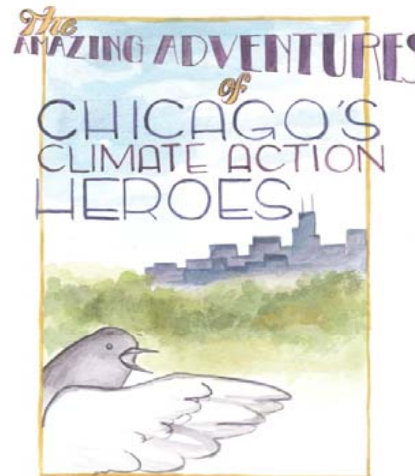
GUIDE TO A CLIMATE-FRIENDLY DIET

Did you know you can help reduce climate change simply by changing some of your eating habits? The American food system is responsible for a lot of the carbon dioxide and other greenhouse gases we produce overall. This means that the meals we eat have a big impact on our climate. Since we all eat,

HERE ARE A FEW STEPS

1 EAT LOCAL & SUSTAINABLE

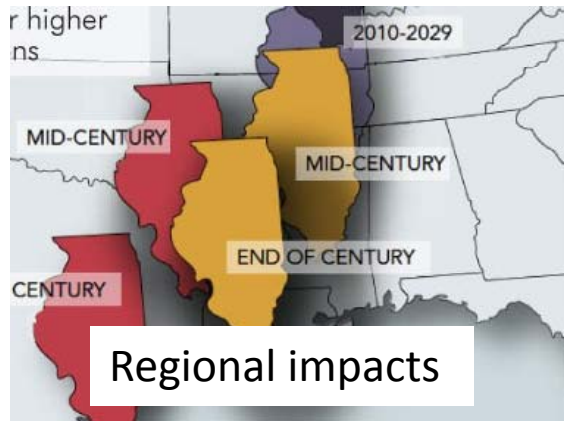
In addition to considering where your food comes from, consider *how* it was made. Sometimes, producing food locally emits more carbon than shipping food from far away. For example, "conventional" agriculture uses large amounts of chemical fertilizers that deplete soil and require large amounts of resources and energy to produce. Conventional agriculture includes chemicals which disrupt plant and animal life, and intensive tillage (turning over the soil), which uses a lot of fuel. Other ways of growing food, including organic agriculture, use less water, sunshine, and farming methods that have been used over many centuries (see box below).



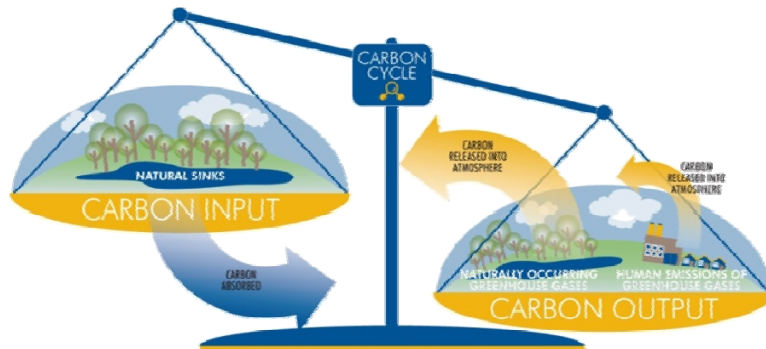
Mapping Green Assets: A Workshop for Identifying Community Strengths

Category	Examples
Libraries	School, public, university library, working on the Go Green project
Businesses	Goodwill store, vegetarian restaurant, yoga studio, car sharing company, repair shop, bike shop, recycling center, health food store, fair trade store, sustainable food restaurant/cafe
Religious Institutions	Church, synagogue, mosque, or religious leader
Community Organizations	Garden club, farmers' market, block club, ethnic association, Sierra Club chapter, daycare center, YWCA
Gardens	Private yard, community or corporate garden, master gardeners, beekeepers, plant experts
Government Agencies	Historical Society, public transit, alderman
Public Parks/Park Districts	Park (publicly owned or pocket park), Park District, naturalists
Health Organizations	Clinic, hospital
Schools/Colleges/Universities	Elementary school, community college, active PTA, green student groups
Natural Areas	Forest preserves, waterways, trails, beaches, bird nesting areas, native landscapes
Public Art/Public Space	Mural, town centers, meeting halls, boulevards
Other Green Assets	Local media, writing group, theater, block club

Climate Change in the Windy City & the World



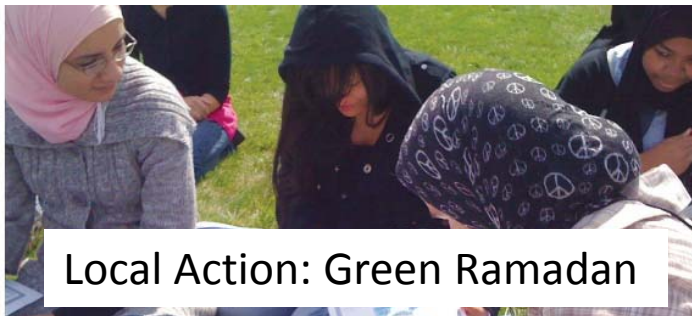
Global warming=snow?



Basic climate science data visualization



Local indicator species



Local Action: Green Ramadan

QUIZ AND DISCUSSION QUESTIONS

What did you learn? Answer these questions to make sure you're understanding the material. How climate change relates to the Chicago region. Feel free to refer back to the book's glossary, to help you become more comfortable articulating these ideas. Check your answers.

1. What is the difference between weather and climate?
2. What's the difference between climate change and global warming? How are they related?
3. Describe the "natural" greenhouse effect and the "enhanced" greenhouse effect.
4. How is climate change today different from the past?
5. What is happening to the carbon cycle?
6. How is climate change affecting people, plants, and animals in the Chicago region?
7. What is one action we can take to mitigate (reduce) climate change?
8. What is one action we can take to help people, nature, and animals adapt to climate change?

Do you have more questions about climate science? Check out the FAQs page on the Chicago Community Climate Action Toolkit website: climatechicago.fieldmuseum.org/FAQ

Activity

1. ... don't rel...

Energy Efficiency

Do these images remind you of anything that you do or have seen others do?



1. Green roof



2. Programmable thermostat



3. Residential homes with window awnings



4. Insulating a home



5. Clothesline



6. Shopping for vegetables



7. Outdoor lighting fixture with CFL bulb



8. Unplugging charger



9. Stuffed toy insulation



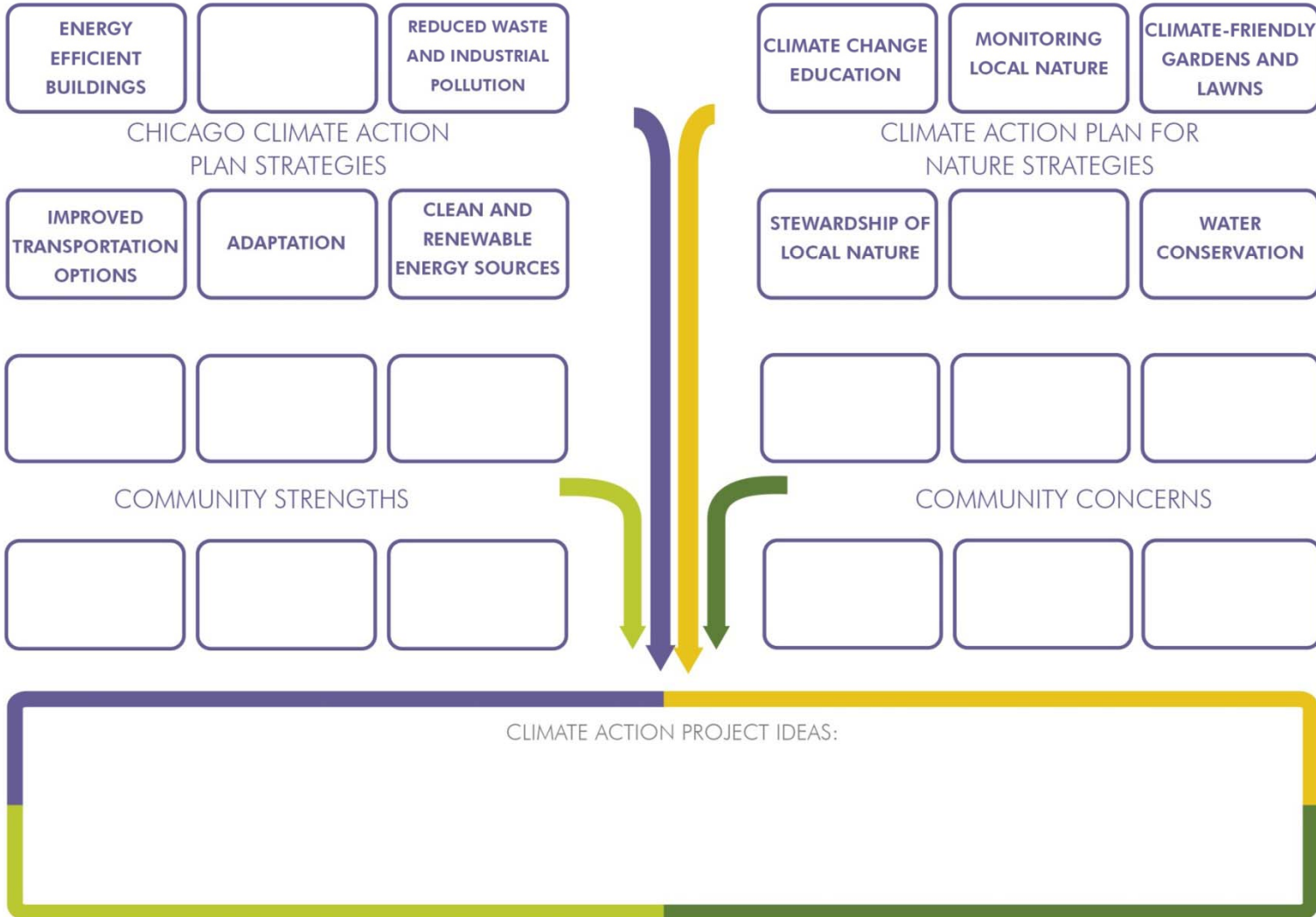
10. Residential home with window coverings

Develop Your Own Project Idea



CHICAGO COMMUNITY CLIMATE ACTION TOOLKIT

PROJECT APPROACH FOR YOUR COMMUNITY: _____



“Make no little plans. They have no magic to stir men's blood...”

-Attributed (perhaps falsely) to Daniel Burnham

“The world seems to be looking for the big solution, which is itself part of the problem, since the most effective solutions are both local and systemic.”

- Paul Hawken, *Blessed Unrest*

Conclusion



Learn More...



CHICAGO COMMUNITY CLIMATE ACTION TOOLKIT

climatechicago.fieldmuseum.org



LIKE the Toolkit on Facebook

<http://www.facebook.com/climatechicago>



Sustainability – What's Culture Got to Do with It?

jlhirsch.blogspot.com